

KT Collection

affordable modern design



Classic modern solids, textures, and patterns

Starting at \$19/yard

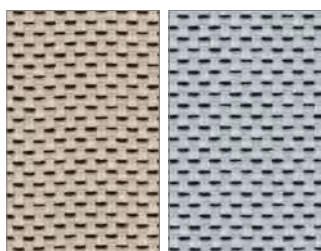
High performance

Many of our KT Collection fabrics are graded-in or pre-approved on partner manufacturers' products. Visit knolltextiles.com/partners for a list of partners.

Visit knolltextiles.com to view the full range of KT Collection fabrics and to order samples.

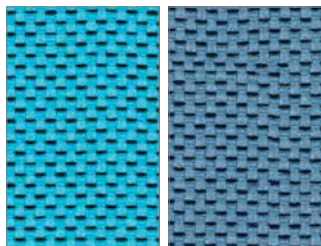
KnollTextiles

Synth K1693



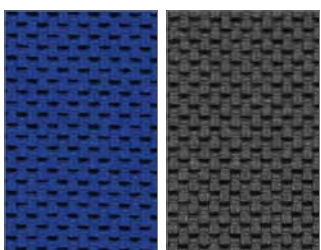
K1693/1

K1693/2



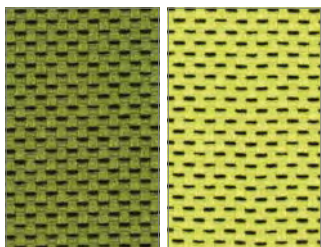
K1693/3

K1693/4



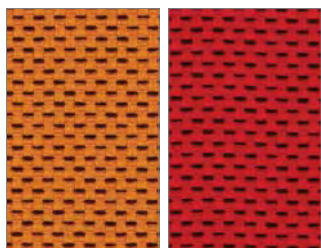
K1693/5

K1693/6



K1693/7

K1693/8



K1693/9

K1693/10

Hourglass K1523



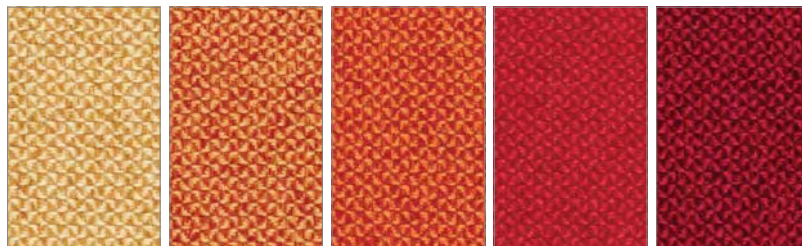
K1523/1

K1523/2

K1523/3

K1523/4

K1523/5



K1523/6

K1523/7

K1523/8

K1523/9

K1523/10



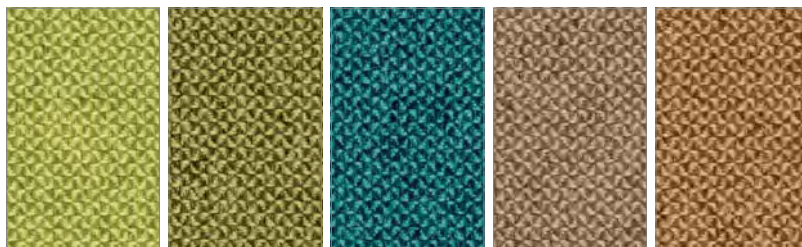
K1523/11

K1523/12

K1523/13

K1523/14

K1523/15



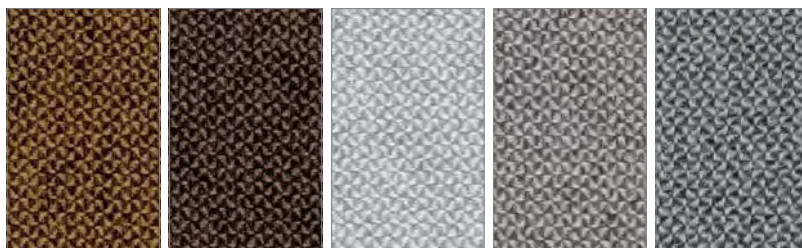
K1523/16

K1523/17

K1523/18

K1523/19

K1523/20



K1523/21

K1523/22

K1523/23

K1523/24

K1523/25

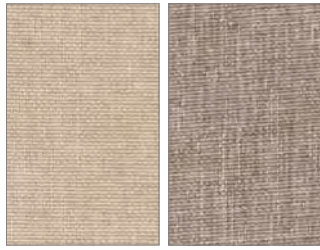


K1523/26

K1523/27

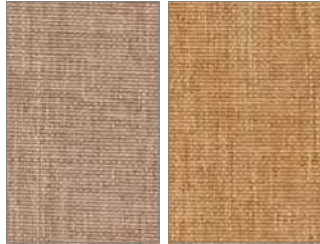
K1523/28

Soliloquy K1458



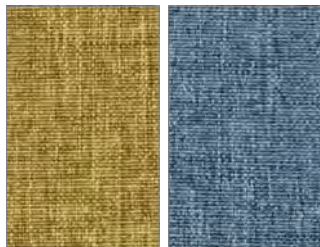
K1458/1

K1458/2



K1458/3

K1458/4



K1458/5

K1458/6



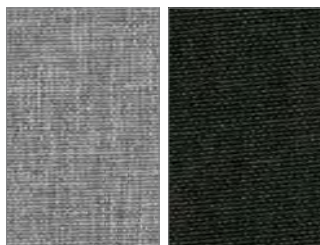
K1458/7

K1458/8



K1458/9

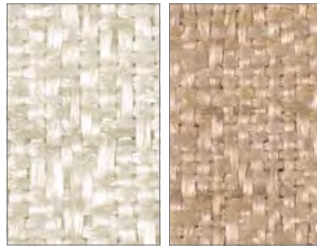
K1458/10



K1458/11

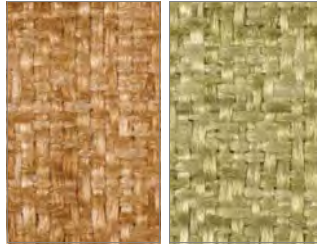
K1458/12

Sonnet K1460



K1460/1

K1460/2



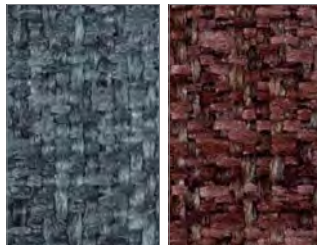
K1460/3

K1460/4



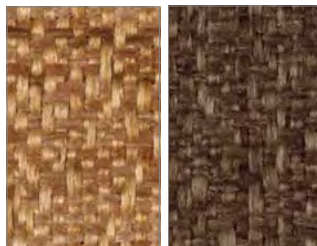
K1460/5

K1460/6



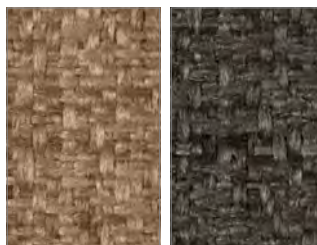
K1460/7

K1460/8



K1460/9

K1460/10



K1460/11

K1460/12

Venue K1558



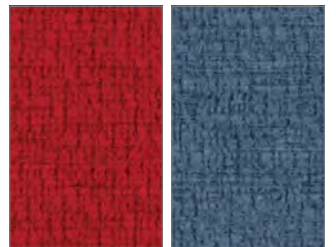
K1558/1

K1558/2



K1558/3

K1558/4



K1558/5

K1558/6



K1558/7

K1558/8



K1558/9

K1558/10



K1558/11

K1558/12



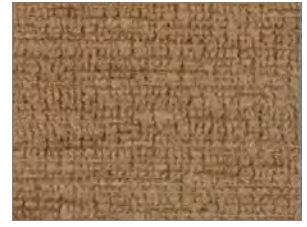
Hourglass K1523/21



Knoll Hopsack K1206/2



Ferry K1697/2



Venue K1558/2



Soliloquy K1458/1



Chance K1552/1



Soliloquy K1458/10



Hourglass K1523/3



Stacks K528/1



Bocce K1255/1



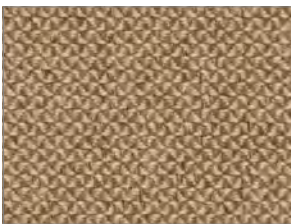
Ransom K1298/1



Sonnet K1460/1



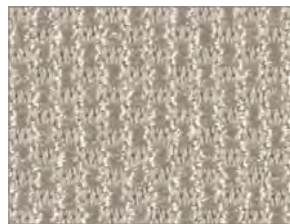
Soliloquy K1458/2



Hourglass K1523/5



Knoll Hopsack K1206/1



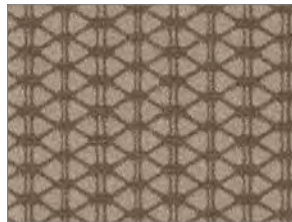
Ransom K1298/2



Sonnet K1460/11



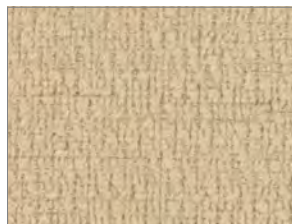
Monarch K1149/1



Axiom K1650/2



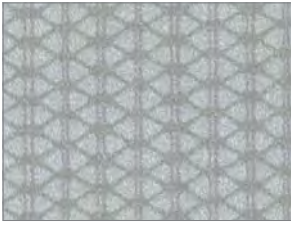
Bocce K1255/7



Venue K1558/1



Spree K1600/1



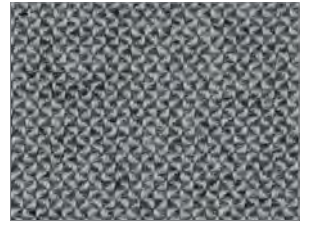
Axiom K1650/1



Venue K1558/11



Soliloquy K1458/12



Hourglass K1523/25



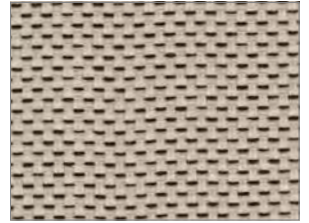
Hourglass K1523/28



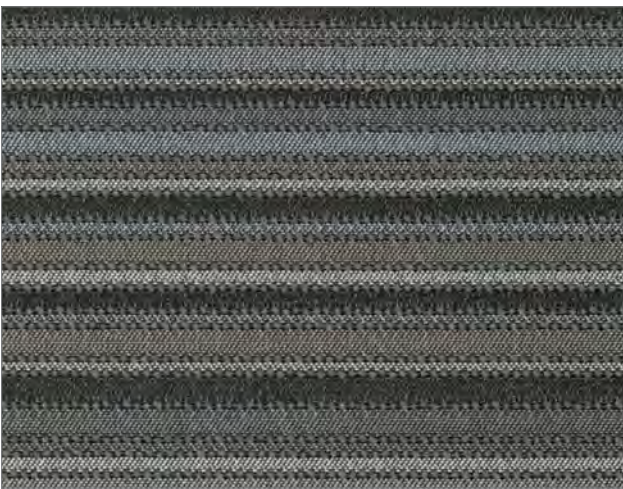
Chance K1552/10



Sonnet K1460/12



Synth K1693/1



Spree K1600/7



Soliloquy K1458/11



Bocce K1255/8



Venue K1558/7



Monarch K1149/14



Ransom K1298/11



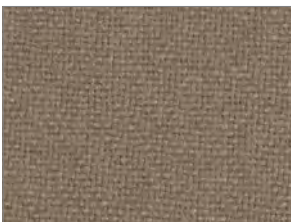
Synth K1693/2



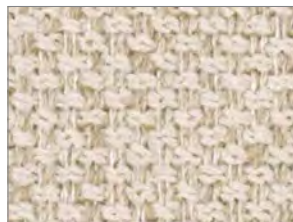
Hourglass K1523/1



Knoll Hopsack K1206/12



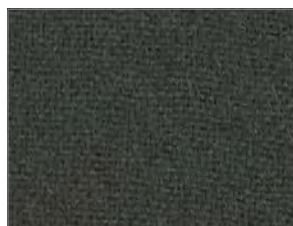
Knoll Hopsack K1206/13



Ferry K1697/1



Monarch K1149/7



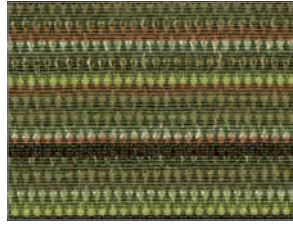
Knoll Hopsack K1206/15



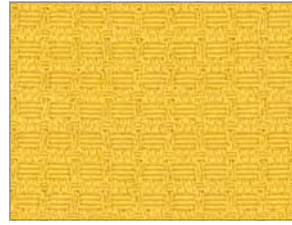
Stacks K528/6



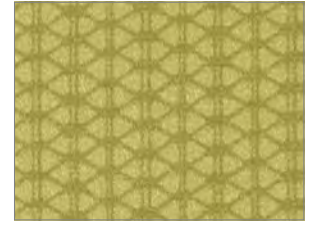
Vinyl K242/66



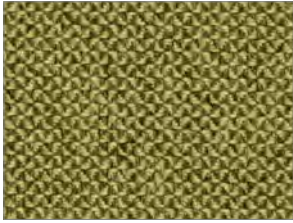
Prep K1076/4



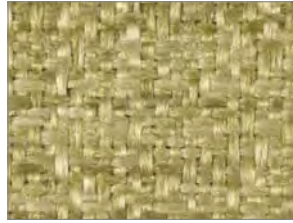
Trophy K1709/6



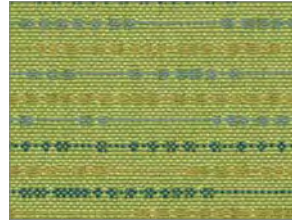
Axiom K1650/8



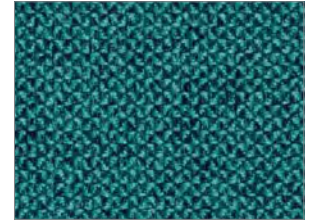
Hourglass K1523/17



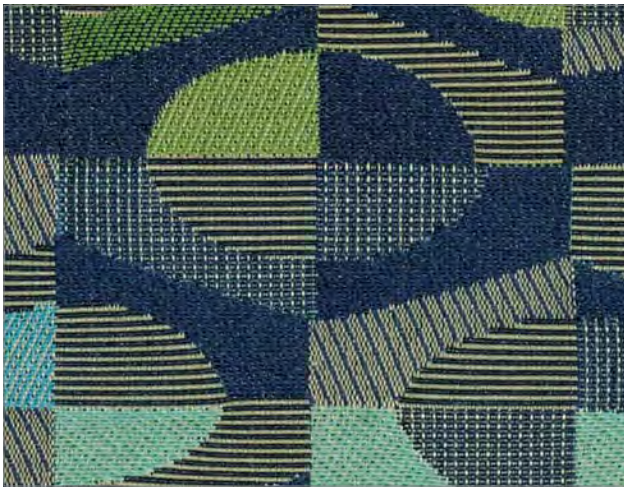
Sonnet K1460/4



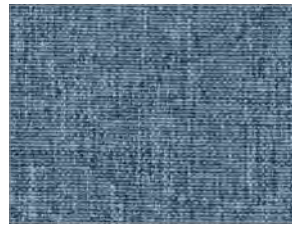
Bocce K1255/2



Hourglass K1523/18



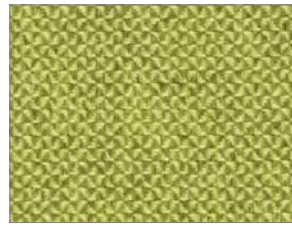
Bistro K1775/6



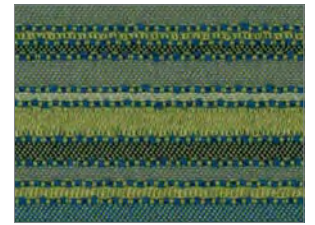
Soliloquy K1458/6



Trophy K1709/8



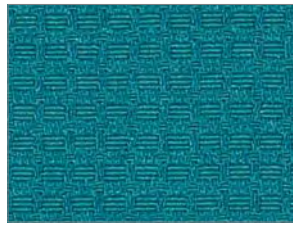
Hourglass K1523/16



Spree K1600/4



Ferry K1697/5



Trophy K1709/11



Sonnet K1460/7



Trophy K1709/14



Hourglass K1523/14



Axiom K1650/7



Bocce K1255/6



Trophy K1709/12



Sutton K1750/6



Venue K1558/4



Sonnet K1460/6



Spree K1600/4



Knoll Hopsack K1206/9



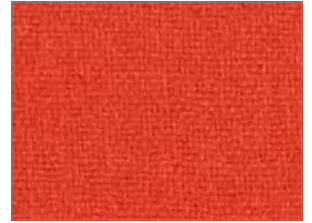
Trophy K1709/7



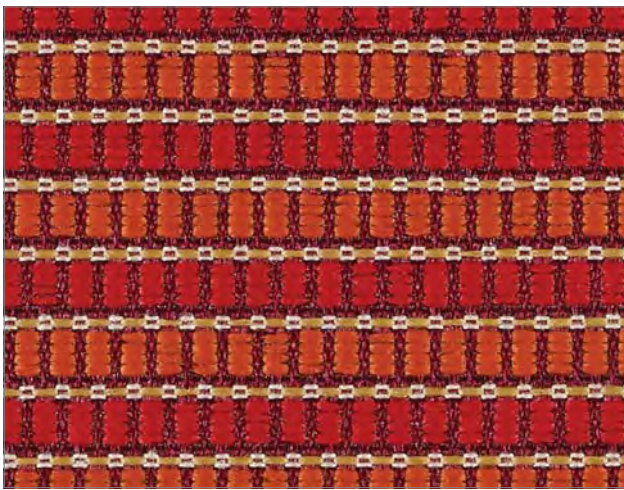
Chance K1552/4



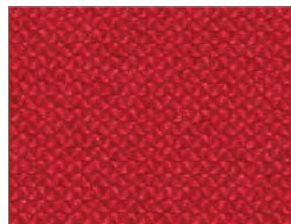
Soliloquy K1458/7



Knoll Hopsack K1206/8



Sutton K1750/3



Hourglass K1523/9



Prep K1076/5



Axiom K1650/10



Trophy K1709/17



Soliloquy K1458/9



Synth K1693/10



Bocce K1255/4



Ferry K1697/8



Hourglass K1523/11



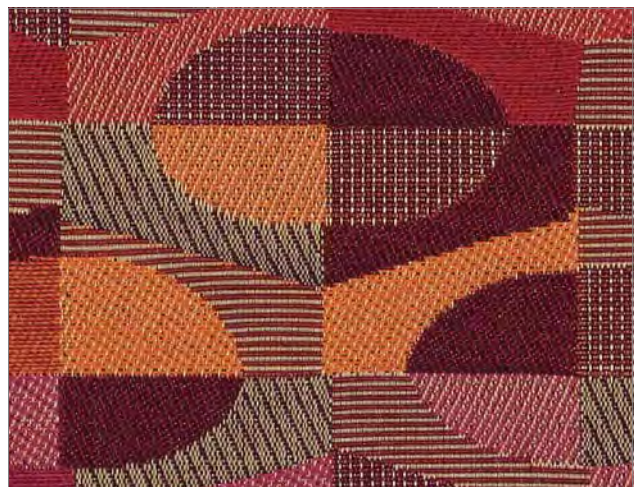
Axiom K1650/9



Chance K1552/6



Hourglass K1523/8



Bistro K1775/4

Technical Information

Name	Style Number	Width	Content	Finish/Backing	Cleaning	Abrasion
Axiom	K1650	54 inches	88% Vinyl 12% Polyester	Backing: Polyester	W Bleach: Water-based or foam cleaning agents or diluted household bleach	100,000+ double rubs, Wyzenbeek method
Bistro	K1775	57 inches	■ 50% Recycled polyester 50% Polyester	Finish: Soil and Stain Repellent Backing: Acrylic	W-S: Clean with water or solvent based cleaning agent	90,000+ double rubs, Wyzenbeek method
Bocce	K1255	54 inches	■ 100% Eco-Intelligent Polyester	N/A	W-S: Clean with water or solvent based cleaning agent	100,000+ double rubs, Wyzenbeek method
Chance	K1552	56 inches	55% Acrylic 45% Polyester	Finish: Incase Backing: Acrylic	W-S: Clean with water or solvent based cleaning agent	50,000+ double rubs, Wyzenbeek method
Ferry	K1697	54 inches	33% Acrylic 67% Polyester	Finish: Teflon Backing: Acrylic	S: Only mild, pure water-free dry cleaning solvents	70,000+ double rubs, Wyzenbeek method
Hourglass	K1523	56 inches	■ 15% Polyester 8% Nylon 77% Post-Consumer Recycled Polyester	Finish: Soil and Stain Repellent	W-S: Clean with water or solvent based cleaning agent	100,000+ double rubs, Wyzenbeek method
Knoll Hopsack	K1206	55 inches	■ 100% Wool	N/A	S: Only mild, pure water-free dry cleaning solvents	40,000+ rubs, Martindale method
Monarch	K1149	54 inches	■ 97% Post-Industrial Recycled Polyester 3% Post-Consumer Recycled Polyester	N/A	W-S: Clean with water or solvent based cleaning agent	90,000+ double rubs, Wyzenbeek method
Prep	K1076	58 inches	■ 67% Post Industrial Recycled Polyester 33% Post Consumer Recycled Polyester	N/A	W-S: Clean with water or solvent based cleaning agent	100,000+ double rubs, Wyzenbeek method
Ransom	K1298	54 inches	■ 100% Post Industrial Recycled Polyester	Finish: Stain Repellent	W-S: Clean with water or solvent based cleaning agent	100,000+ double rubs, Wyzenbeek method
Soliloquy	K1458	59 inches	■ 100% Recycled Polyester	Finish: Soil and Stain Repellent	W-S: Clean with water or solvent based cleaning agent	90,000+ double rubs, Wyzenbeek method
Sonnet	K1460	54 inches	100% Polyester	Backing: Latex	W-S: Clean with water or solvent based cleaning agent	55,000+ double rubs, Wyzenbeek method
Spree	K1600	54 inches	■ 100% Eco-Intelligent Polyester	N/A	W-S: Clean with water or solvent based cleaning agent	90,000+ double rubs, Wyzenbeek method
Stacks	K528	54 inches	62% Polyester 30% Post-Industrial Recycled Polyester 8% Post-Consumer Recycled Polyester	Finish: N/A Backing: Acrylic	W-S: Clean with water or solvent based cleaning agent, or diluted household bleach	75,000+ double rubs, Wyzenbeek method
Sutton	K1750	56 inches	■ 56% Recycled Polyester 44% Polyester	Finish: Soil and Stain Repellent Backing: Acrylic	W-S: Clean with water or solvent based cleaning agent	100,000+ double rubs, Wyzenbeek method
Synth	K1693	55 inches	■ 100% Recycled Polyester	N/A	W-S: Clean with water or solvent based cleaning agent	100,000+ double rubs, Wyzenbeek method
Venue	K1558	58 inches	88% Polyester 12% Recycled Polyester	Finish: Soil and Stain Repellent Backing: Acrylic	W-S: Clean with water or solvent based cleaning agent	60,000+ double rubs, Wyzenbeek method
Vinyl	K242	54 inches	91% Vinyl 6% Polyester 3% Cotton	Backing: Polyester and Cotton	W: Water-based cleaning agents or foam	100,000+ double rubs, Wyzenbeek method

■ Environmental

Most KT Collection fabrics are made in the USA.